

Draft Mobilization Structure

Group 1
CDCR
17,622
BU: 1,3,4,11,14,15,17,20

Group 2
DMH, DDS, DVA & Special Schools
8,998
BU: 1,3,4,11,14,15,17,20,21

Group 3
DOT, DFG, DFA, DWR & DPR
10,363
BU: 1,4,11,14,15, 21

Group 4
EDD, SCIF & DDS
15,300
BU: 1,4,14,15,17

Group 5
DMV
6,471
BU: 1,4,11,14,15

Group 6
Sacramento Area Office & DLC Support
27,607
BU: 1,4,11,14,15,17,20,21

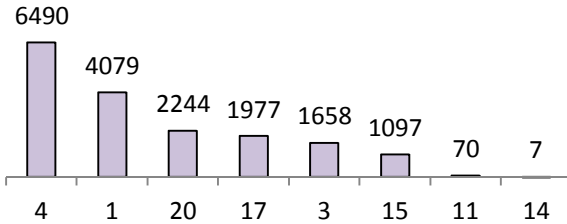
Group 7
Bay/Fresno Area Depts. & DLC Support
4,246
BU: 1,3,4,11,14,15,17,20,21

Group 8
LA/Riverside/San Diego Area Departments & DLC Support
5,391
BU: 1,3,4,11,14,15,17,20,21

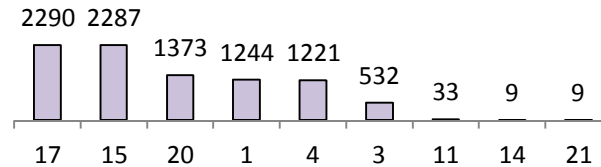
Group 9
Bargaining Unit Support
BU: All

Draft Mobilization Structure with Unit Density

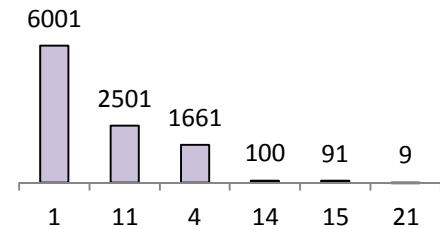
Group 1
CDCR
 17,622
 BU: 1,3,4,11,14,15,17,20



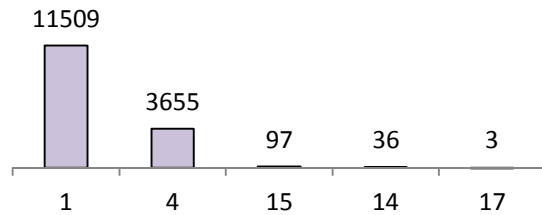
Group 2
DMH, DDS, DVA & Special Schools
 8,998
 BU: 1,3,4,11,14,15,17,20,21



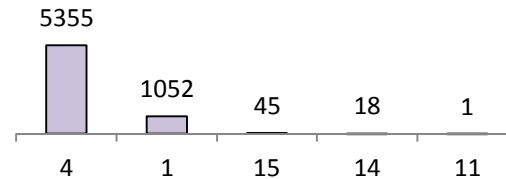
Group 3
DOT, DFG, DFA, DWR & DPR
 10,363
 BU: 1,4,11,14,15,21



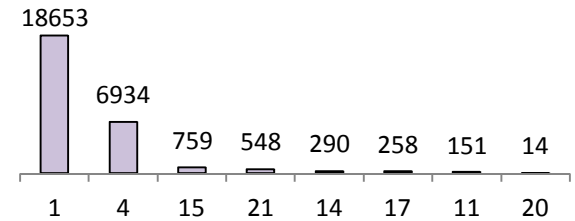
Group 4
EDD, SCIF & DDS
 15,300
 BU: 1,4,14,15,17



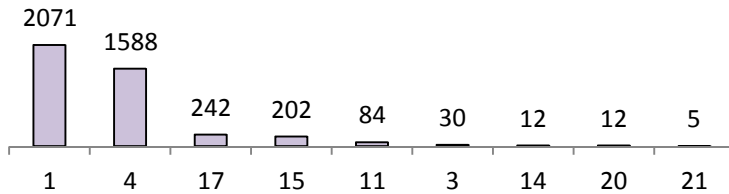
Group 5
DMV
 6,471
 BU: 1,4,11,14,15



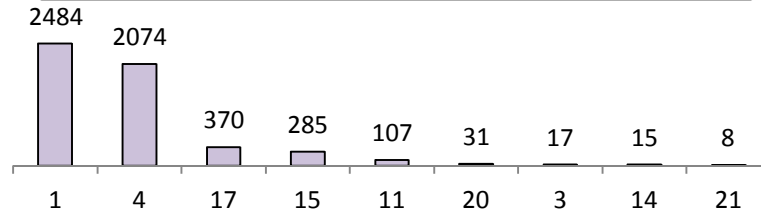
Group 6
Sacramento Area Office & DLC Support
 27,607
 BU: 1,4,11,14,15,17,20,21



Group 7
Bay/Fresno Area Depts. & DLC Support
 4,246
 BU: 1,3,4,11,14,15,17,20,21



Group 8
LA/Riverside/San Diego Area Departments & DLC Support
 5,391
 BU: 1,3,4,11,14,15,17,20,21



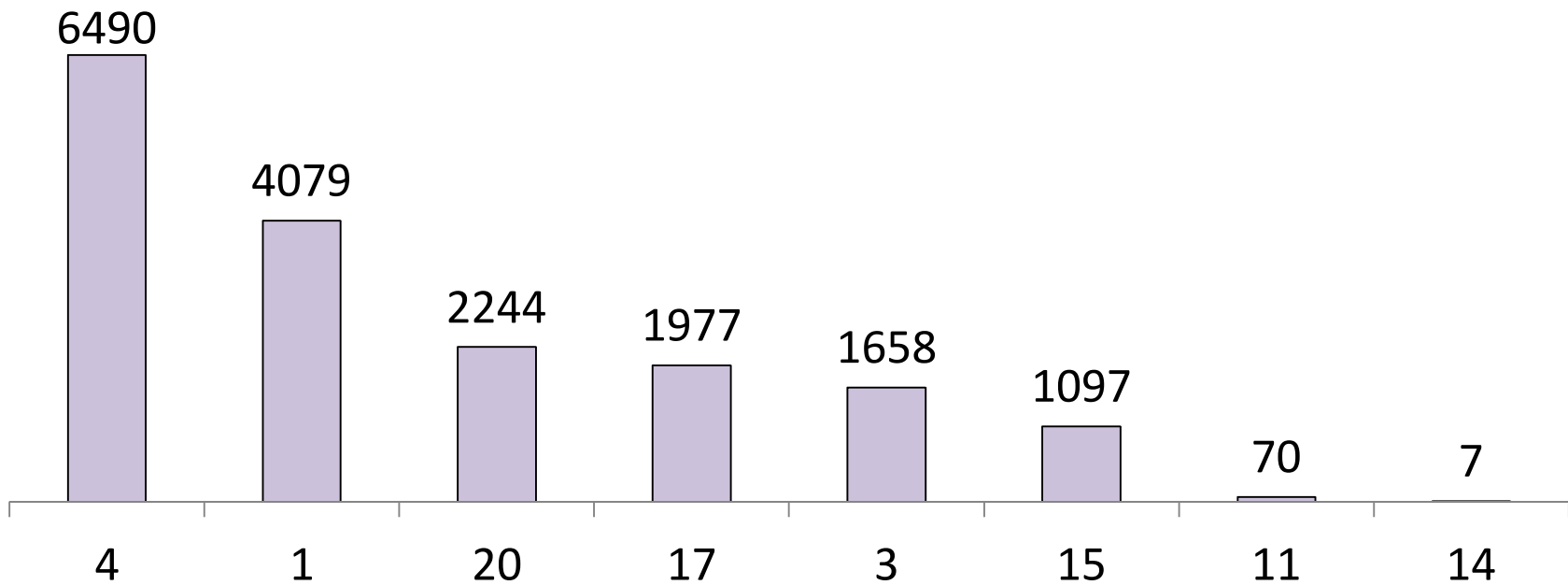
BU Totals: BU1 47,343 – BU3 2,237 – BU4 28,989 – BU11 2,952 – BU14 487 – BU15 4,863 – BU17 5,140 – BU20 3,674 – BU21 579
 (Totals from Unionware, August 2009 and represent complete BUs -- including "out of state" workers)

Group 1

CDCR

17,622

BU: 1,3,4,11,14,15,17,20

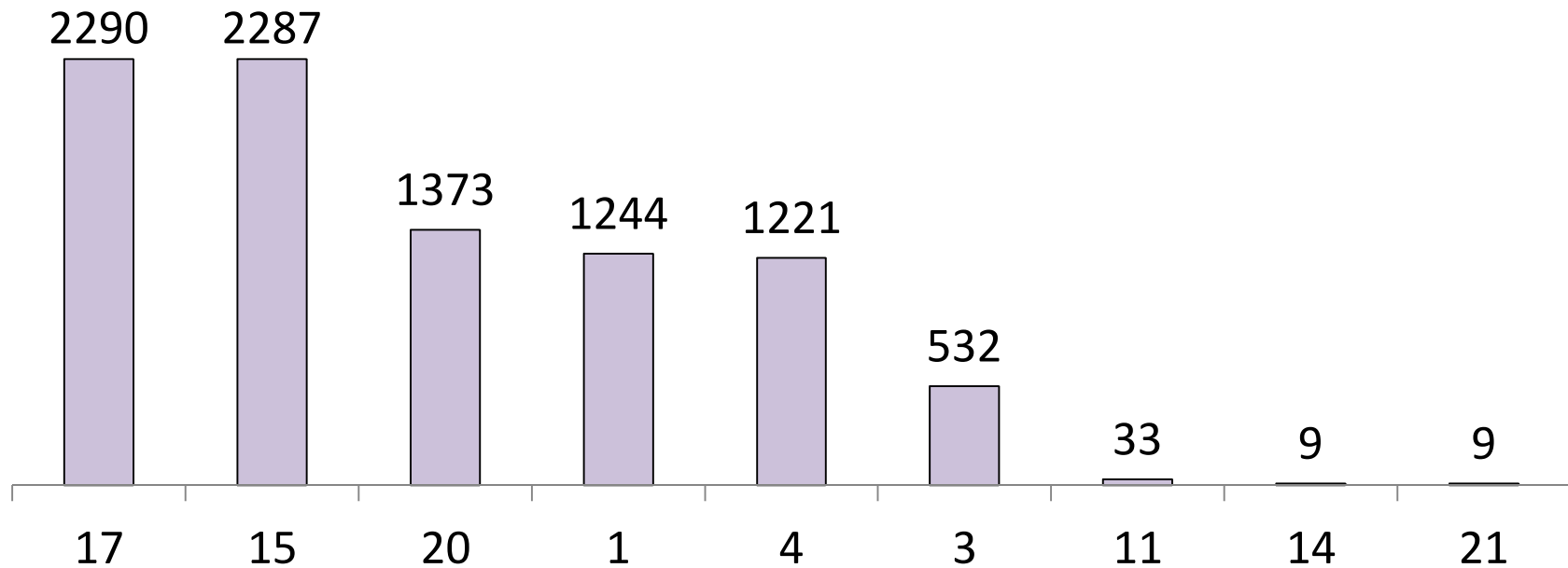


Group 2

DMH, DDS, DVA & Special Schools

8,998

BU: 1,3,4,11,14,15,17,20,21

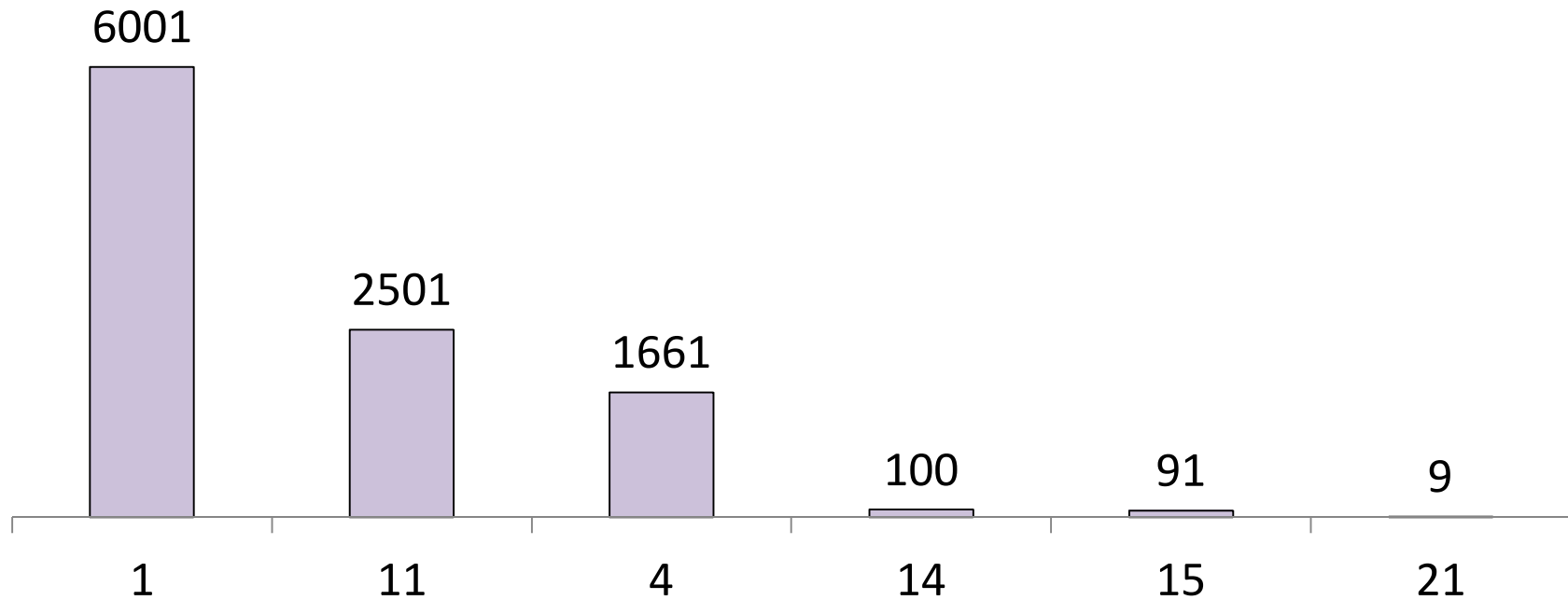


Group 3

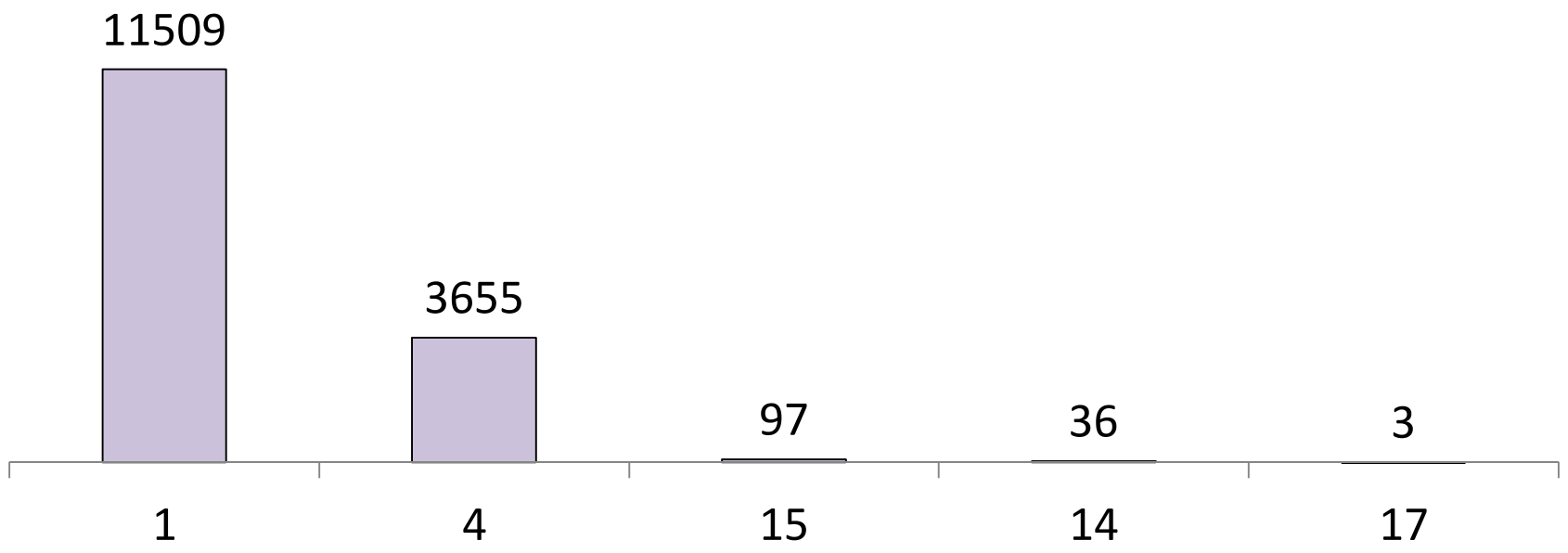
DOT, DFG, DFA, DWR & DPR

10,363

BU: 1,4,11,14,15,21



Group 4
EDD, SCIF & DDSD
15,300
BU: 1,4,14,15,17

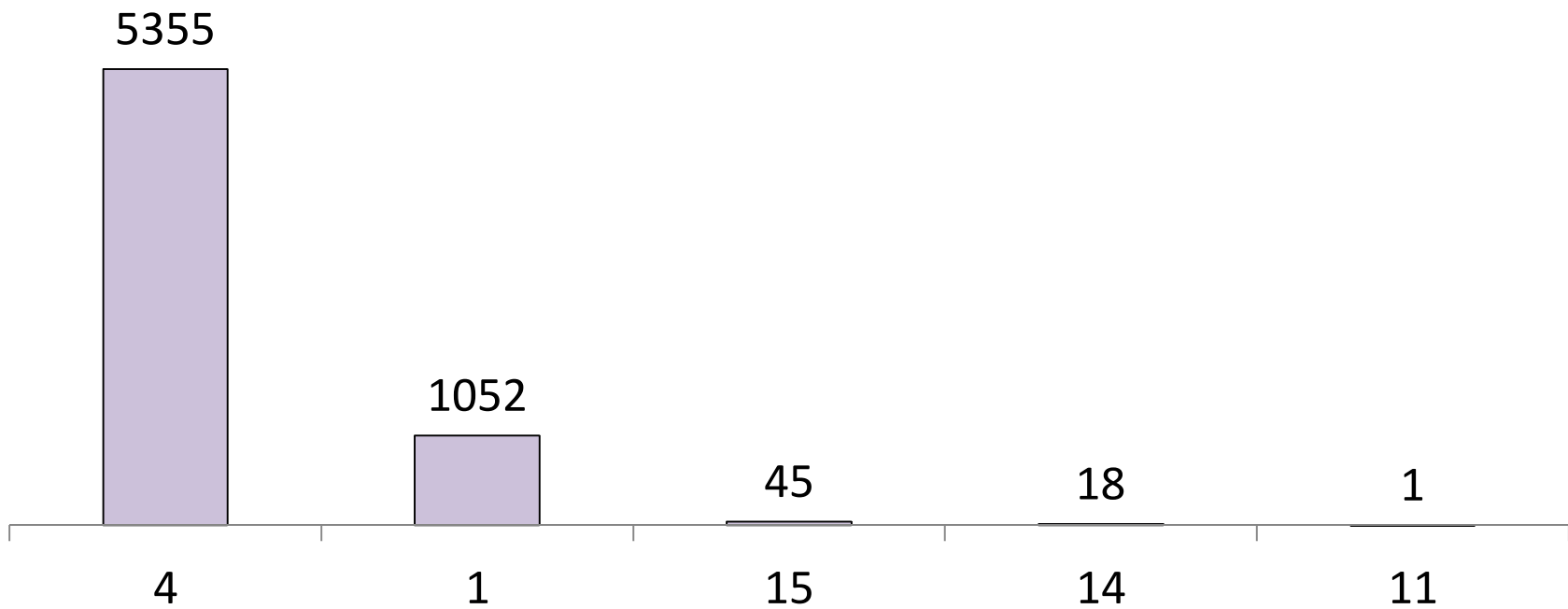


Group 5

DMV

6,471

BU: 1,4,11,14,15

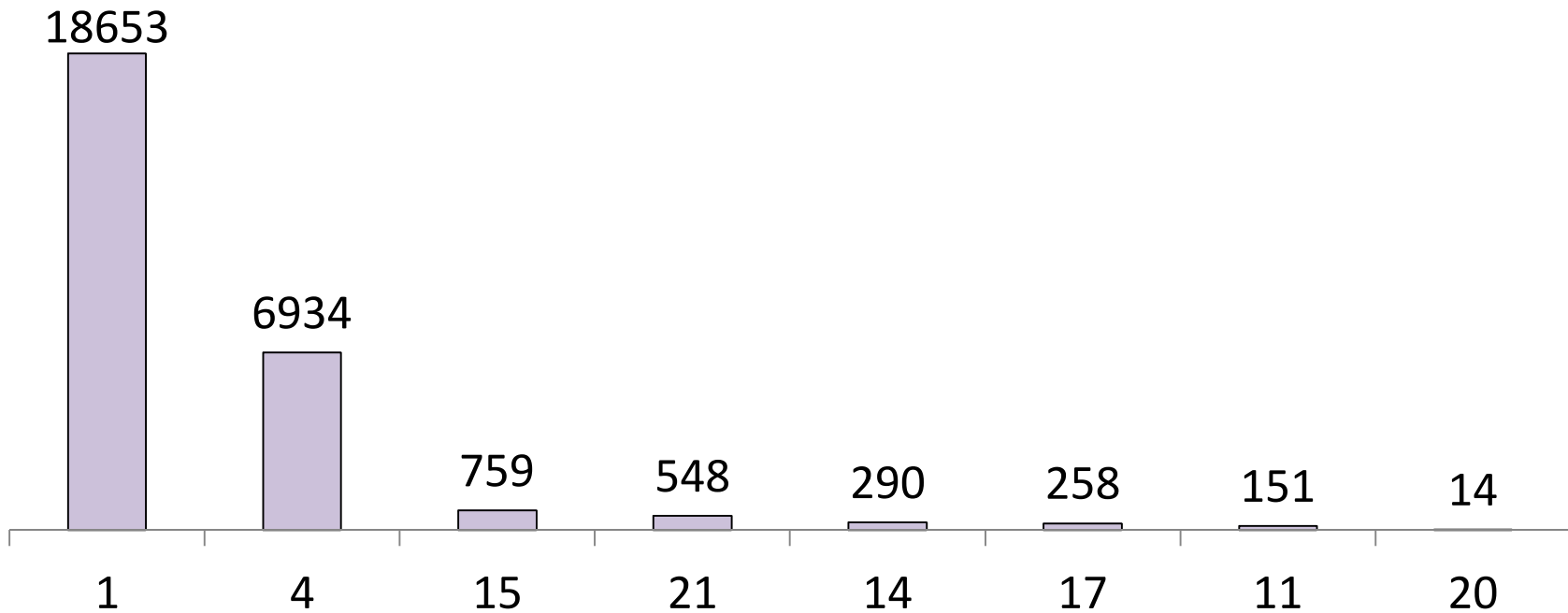


Group 6

Sacramento Area Office & DLC Support

27,607

BU: 1,4,11,14,15,17,20,21

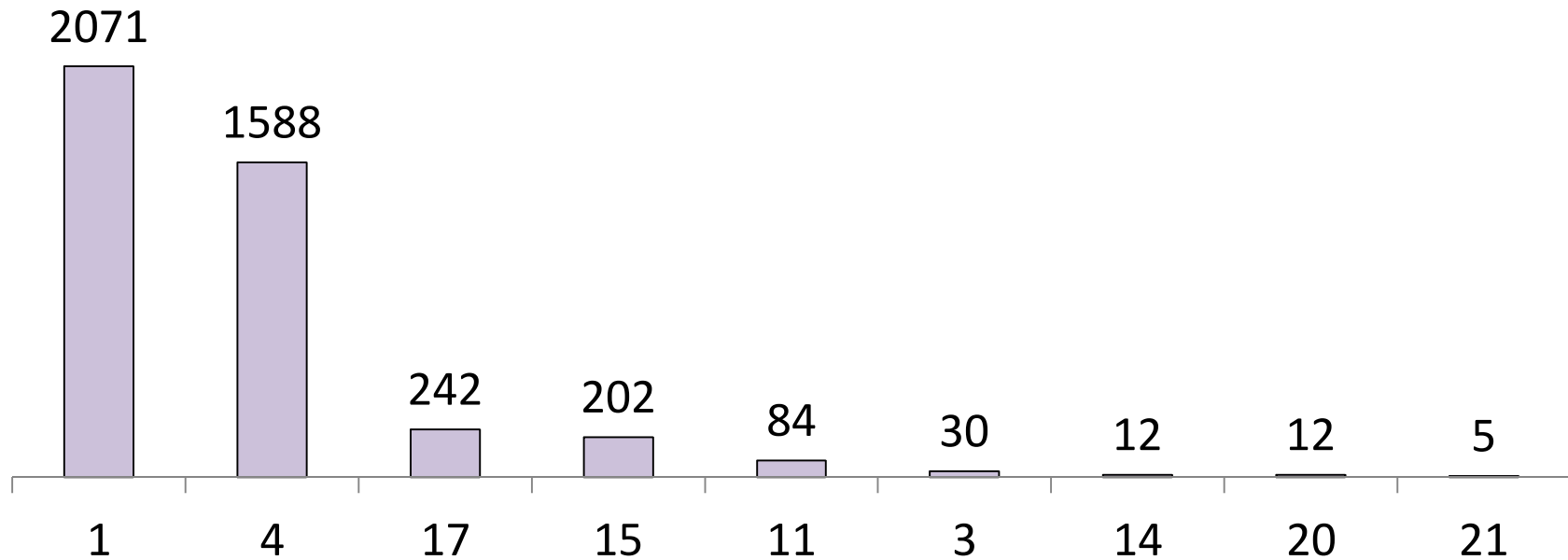


Group 7

Bay/Fresno Area Depts. & DLC Support

4,246

BU: 1,3,4,11,14,15,17,20,21

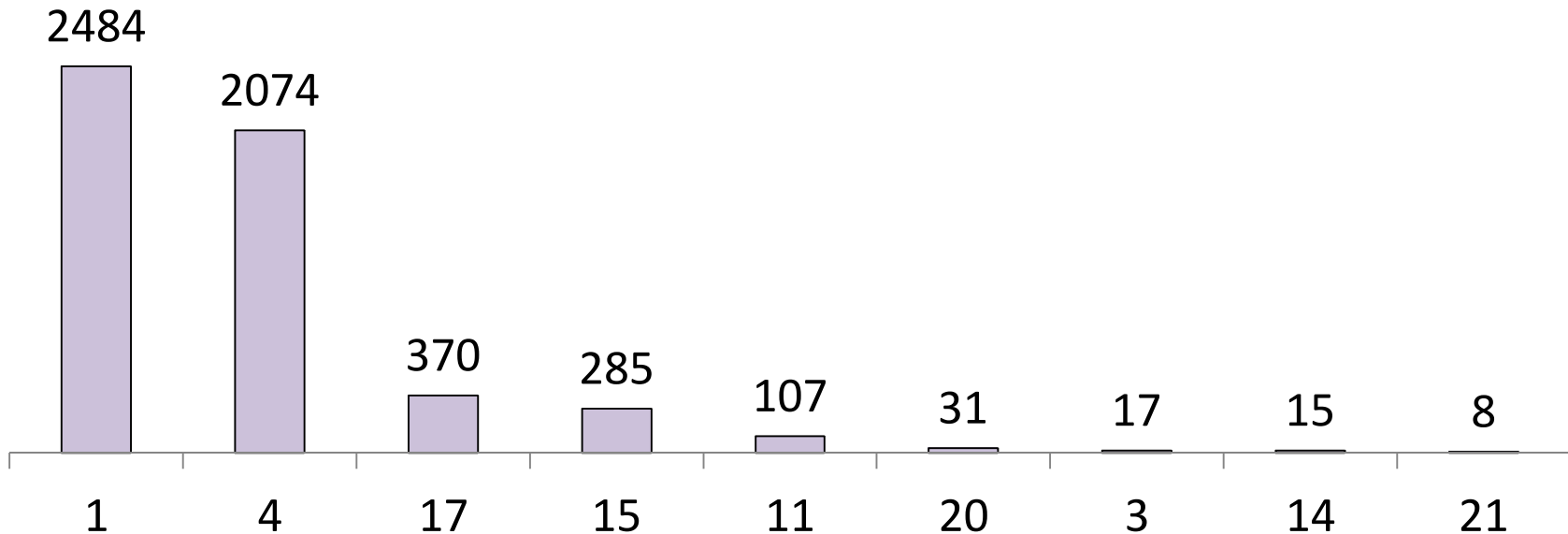


Group 8

LA/Riverside/San Diego Area Departments & DLC Support

5,391

BU: 1,3,4,11,14,15,17,20,21



Group 9

Bargaining Unit Support

BU: All